

Safety Induction

Regeneration Hub Zero << Confidential - Reju Proprietary Information >>

Welcome to Reju's Regeneration Hub Zero

Your safety is important to us so please pay attention to the following information before your visit.

You will be accompanied at all times while at the Reju Hub, but it is important that you are always alert and aware of your surroundings.



Electromagnetic risk at site, incompatibility with pregnancy and pacemaker

Safety rules during your visit

1. Operating activities are on-going. Stick close to your guide

- Mandatory PPE : Safety helmet, safety glasses, lab coat, and closed toe shoes.
- Casual shoes are permitted, provided they are closed toe and without heels. Safety shoes will be available at the office if guests' casual shoes are not compatible.
- Not allowed to change or remove PPE jacket inside of plant due to static electricity.



Protections for helmet and disinfectant product for shoes are available in the office. Do not hesitate to ask.

Safety rules during your visit

2. Be aware of your surroundings during the visit

- Visitors must stay close to their guide to avoid entering dangerous areas.
- Be aware of the presence of pipes at level of both feet and heads.
- Touching any equipment is strictly prohibited.
- Fear of height : flooring that you can see through the structure is up to +12 meters from ground.



Dropped
objects



Watch
your
head



Beware
of falling



Energized



Pressure
inside



Hot
surface



Loaded with
chemicals

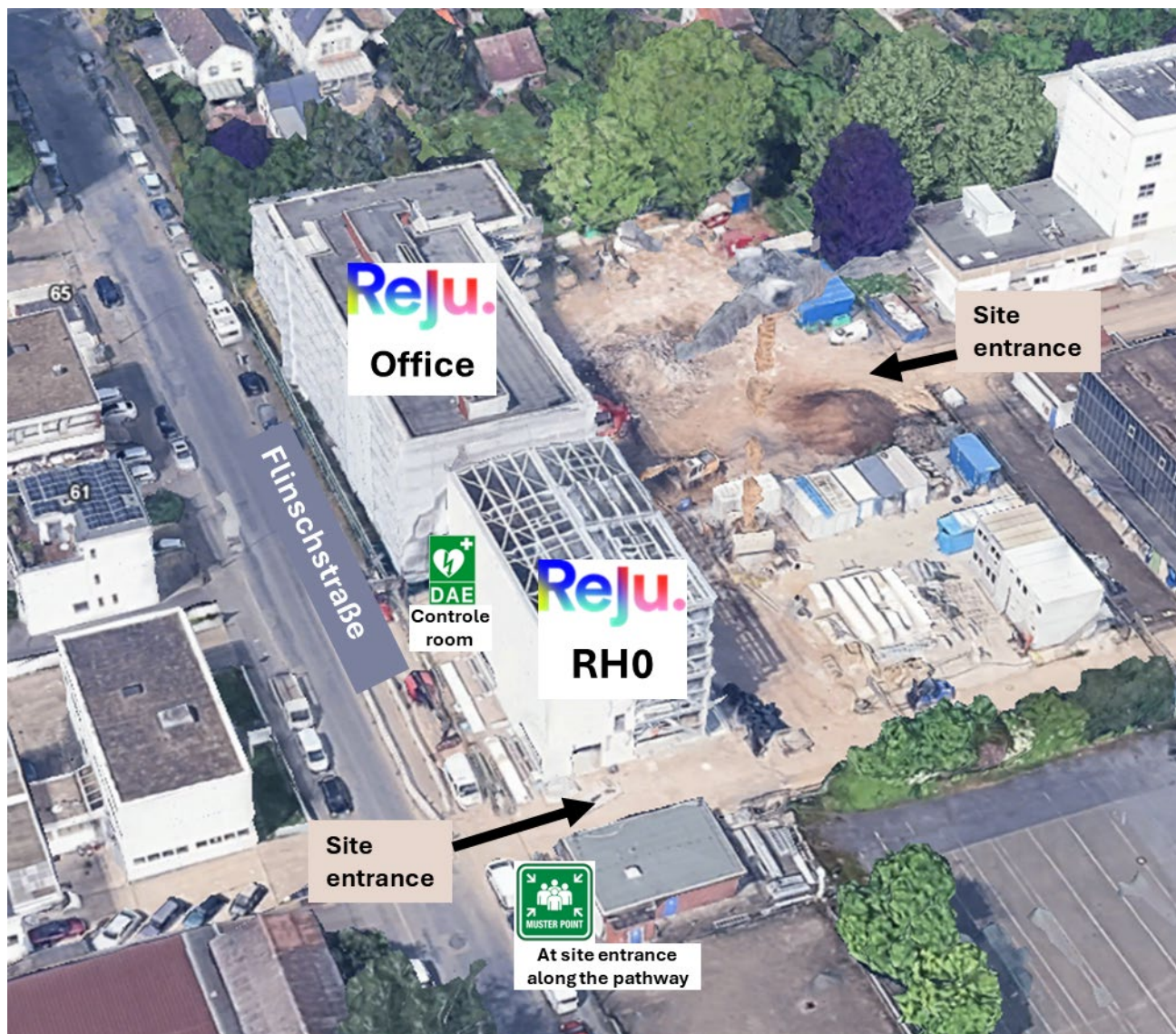
Safety rules during your visit

3. Please note that the following items are not permitted in the Regeneration Hub Zero grounds

- No smartphones, lighters, or e-cigarettes are allowed on site. Lockers are available at the Reju office
- No food or drink on premises
- Flammable substances
- Arms



Regeneration Hub Zero



Emergency Evacuation Plan

When you hear the evacuation signal, evacuate the site and head to the meeting point shown on map.

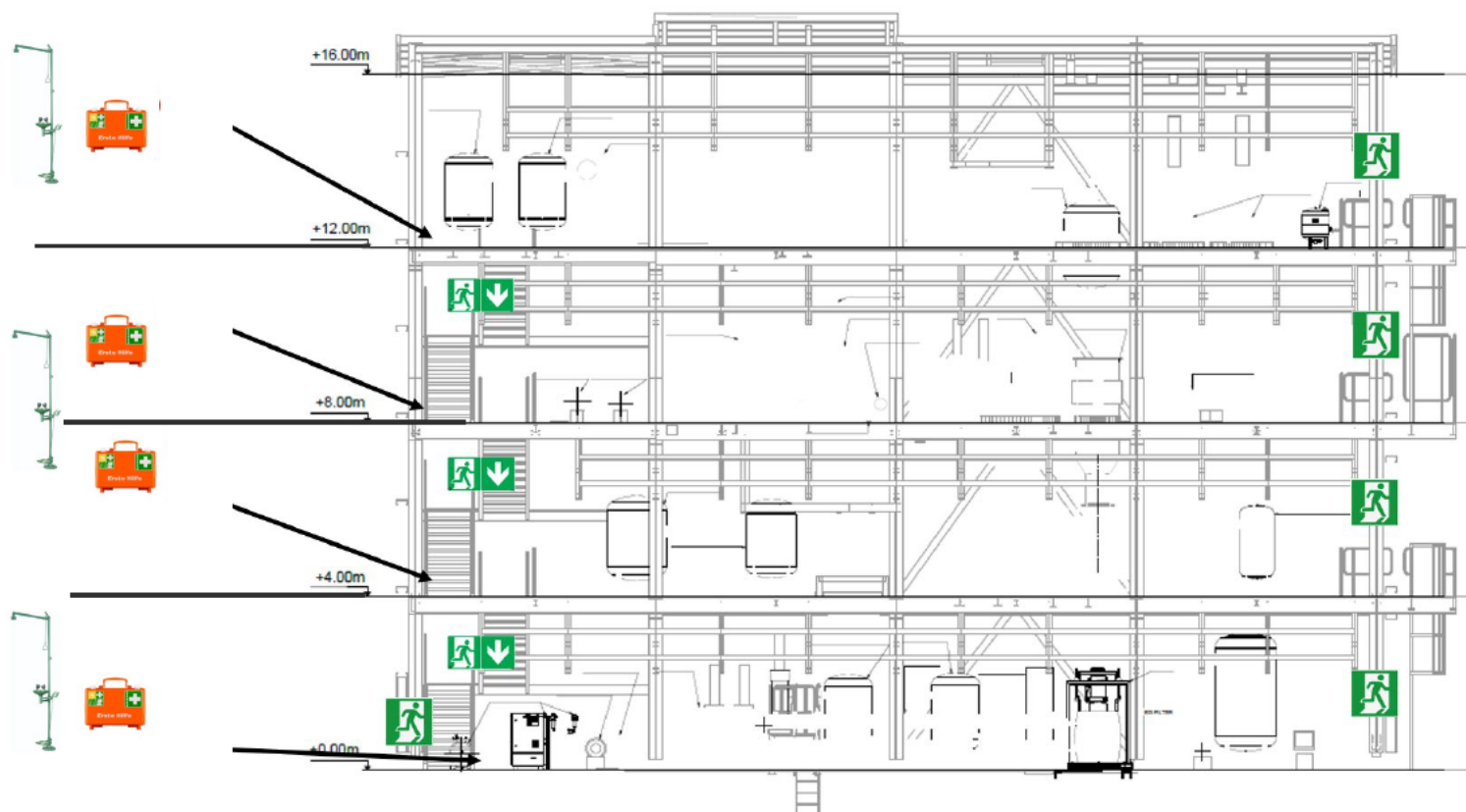
Wait for the instructions at the meeting point.

Do not re-enter the site without authorization from site management.

Emergency Evacuation Plan

First Aid Kits + evacuation signal + Emergency showers are located on each floor

In case of evacuation please use the main staircase inside the building



In case of emergency,
follow the instructions of
your guide



First Aiders are
identified with
stickers on helmet

Ersthelfer sind mit
Aufklebern am Helm
gekennzeichnet

Safety feedback

If you have any safety feedback you would like to share with us after your visit, we would like to hear about it.

Please use the QR code here to give feedback.

